



ARGOX Linux Printer Driver install/uninstall Instruction

Version: 1.00

Content

- 1. OVERVIEW 3
 - 1.1. SYSTEM REQUIREMENT 3
- 2. INSTALL / UNINSTALL DRIVER 4
 - 2.1. KYLIN PRINTER DRIVER 4
 - 2.1.1. *Install Driver*..... 4
 - 2.1.2. *Uninstall Driver*..... 6
 - 2.2. UOS PRINTER DRIVER..... 7
 - 2.2.1. *Install Driver*..... 7
 - 3.2.2. *Uninstall Driver*..... 9
 - 2.3. OTHER LINUX PRINTER DRIVER..... 12
 - 2.3.1. *Install Driver*..... 12
 - 2.3.2. *Uninstall Driver*..... 12
- 3. ADD PRINTER 13
 - 3.1. ADD PRINTER VIA USB PORT 13
 - 3.2. ADD PRINTER VIA NETWORK PORT..... 18

1. Overview

ARGOX Linux printer driver is based on CUPS printing system for Linux. All the device communications are handled by CUPS (backend). The raster filter converts the CUPS raster graphic into PPLA, PPLB or PPLZ which the printer can understand. For example, if user prints a label, the raster filter converts the graphic into PPLA, PPLB or PPLZ command which will be send to the printer together with the printer options.

1.1. System Requirement

The minimum system requirements are listed as below:

- IBM-compatible PC (CPU architecture: x86 or x86_64)
- Supported Linux distributions:
 - Ubuntu 11.10 ~ 20.10
 - Fedora 16 ~ 34
 - openSUSE 11.4 ~ Leap 15.3
 - Red Hat Enterprise Linux Server 7.2 ~ 8.4
 - CentOS 7 ~ 8
 - 中标麒麟 6 (NeoKylin 6)
 - 中科红旗 6 (Red Flag Linux 6)
 - 统信桌面操作系统 V20
 - 银河麒麟桌面操作系统 V10
- CUPS printing system for Linux (1.5 ~ 2.3.3)

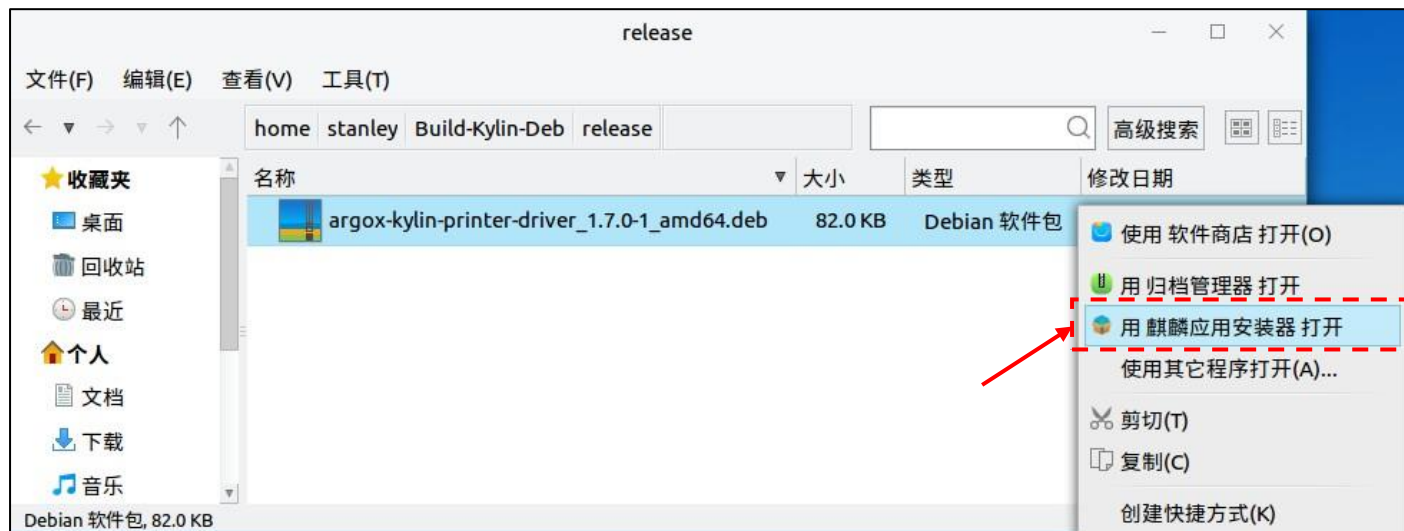
2. Install / Uninstall Driver

2.1. Kylin Printer Driver

2.1.1. Install Driver

ARGOX Kylin printer driver is in deb package format. Right clicking to the driver deb package file with mouse to open the pop-up menu and select "Use Kylin package installer (See [Figure 2.A]) to open" to open the Kylin package installer (See [Figure 2.B]).

Click on "One Click Install" button to install the printer driver. See [Figure 2.C] and [Figure 2.D].



[Figure 2.A]



[Figure 2.B]



[Figure 2.C]



[Figure 2.D]

The UI of the package installer and the installation procedure are controlled by Kylin OS, they are not controlled by ARGONX Kylin printer driver.

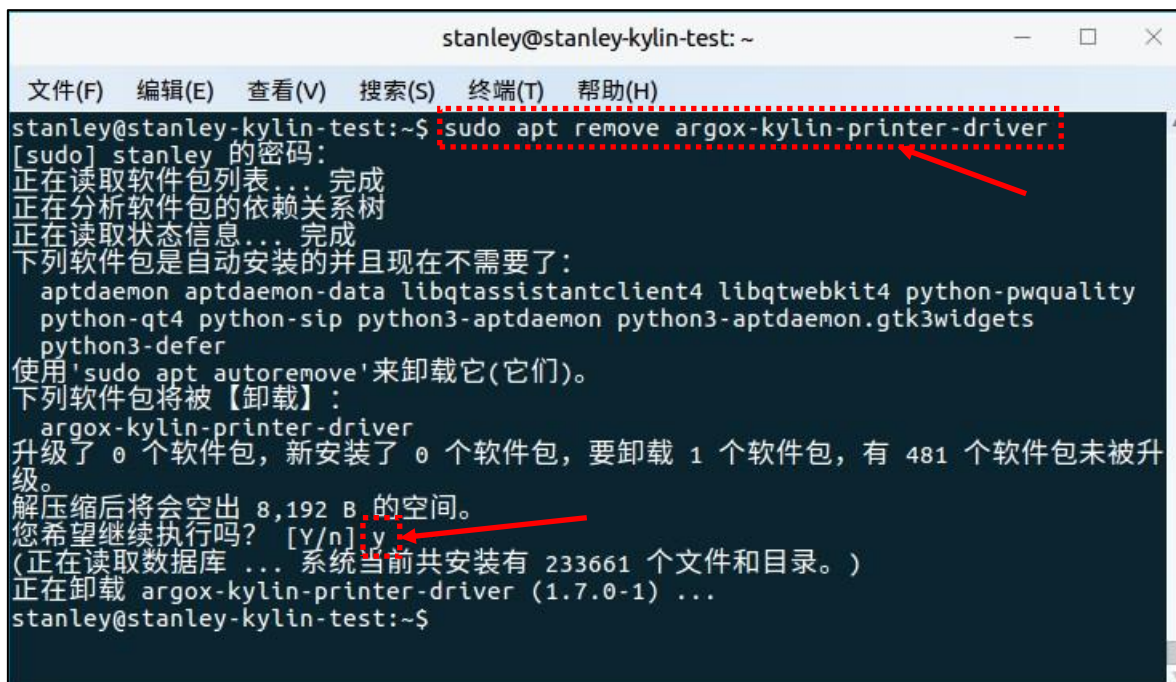
2.1.2. Uninstall Driver

Due to there is no uninstall function in the package installer, it is necessary to use command line in terminal to uninstall the driver package.

Input the following command line in terminal window.

```
$ sudo apt remove argox-kylin-printer-driver
```

Input "y" during uninstalling processing to finish it. See [Figure 2.1.2.A].



```
stanley@stanley-kylin-test: ~
文件(F) 编辑(E) 查看(V) 搜索(S) 终端(T) 帮助(H)
stanley@stanley-kylin-test:~$ sudo apt remove argox-kylin-printer-driver
[sudo] stanley 的密码:
正在读取软件包列表... 完成
正在分析软件包的依赖关系树
正在读取状态信息... 完成
下列软件包是自动安装的并且现在不需要了:
  aptdaemon aptdaemon-data libqtassistantclient4 libqtwebkit4 python-pwquality
  python-qt4 python-sip python3-aptdaemon python3-aptdaemon.gtk3widgets
  python3-defer
使用 'sudo apt autoremove' 来卸载它(它们)。
下列软件包将被【卸载】:
  argox-kylin-printer-driver
升级了 0 个软件包, 新安装了 0 个软件包, 要卸载 1 个软件包, 有 481 个软件包未被升级。
解压缩后将会空出 8,192 B 的空间。
您希望继续执行吗? [Y/n] y
(正在读取数据库 ... 系统当前共安装有 233661 个文件和目录。)
正在卸载 argox-kylin-printer-driver (1.7.0-1) ...
stanley@stanley-kylin-test:~$
```

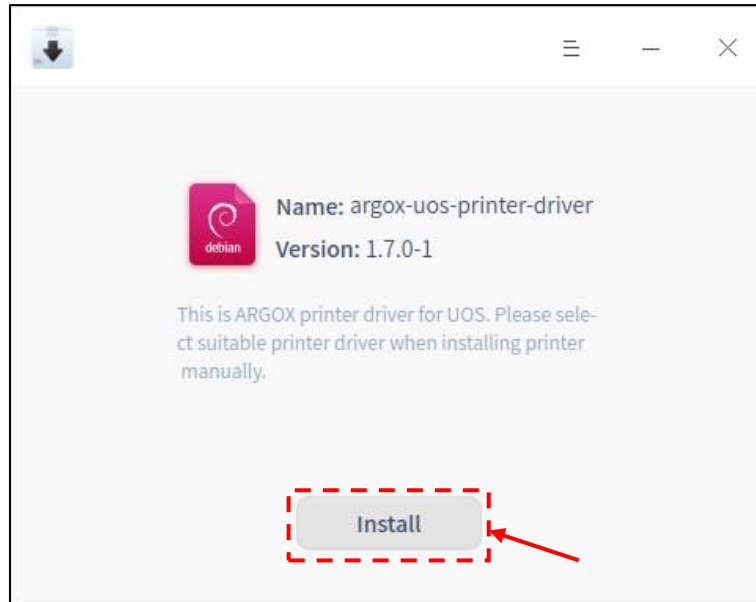
[Figure 2.1.2.A]

2.2. UOS Printer Driver

2.2.1. Install Driver

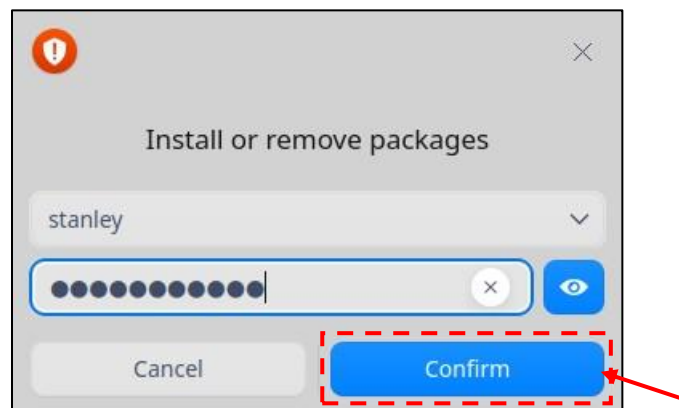
ARGOX UOS printer driver is in deb package format. Double click the driver deb package file with mouse to open the package installer (See [Figure 2.2.1.A]).

Click on "Install" button to install the printer driver.

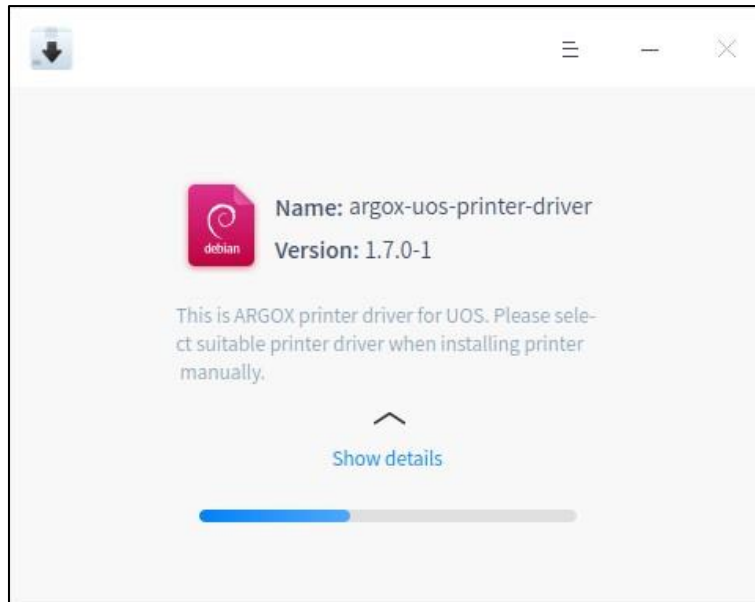


[Figure 2.2.1.A]

Input password then press "Confirm" to go to next step. See [Figure 2.2.1.B] and [Figure 2.2.1.C].

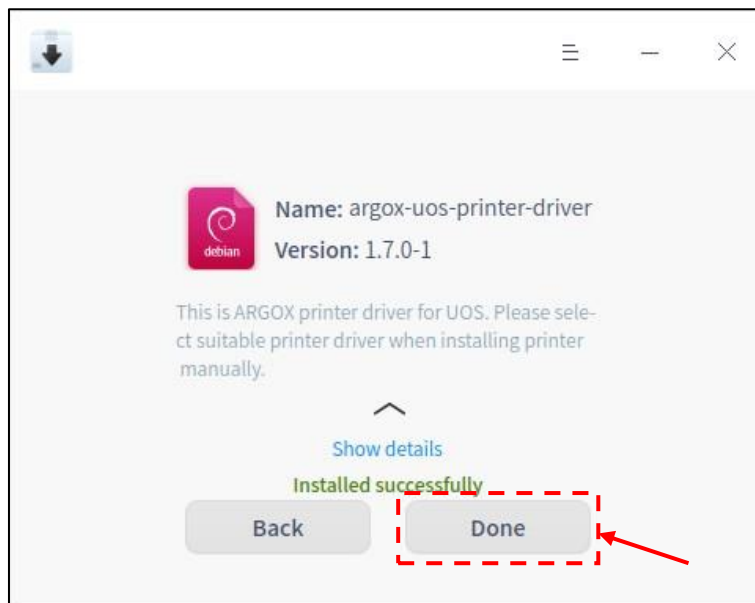


[Figure 2.2.1.B]



[Figure 2.2.1.C]

Click "Done" to finish the driver installation process. See [Figure 2.2.1.D].

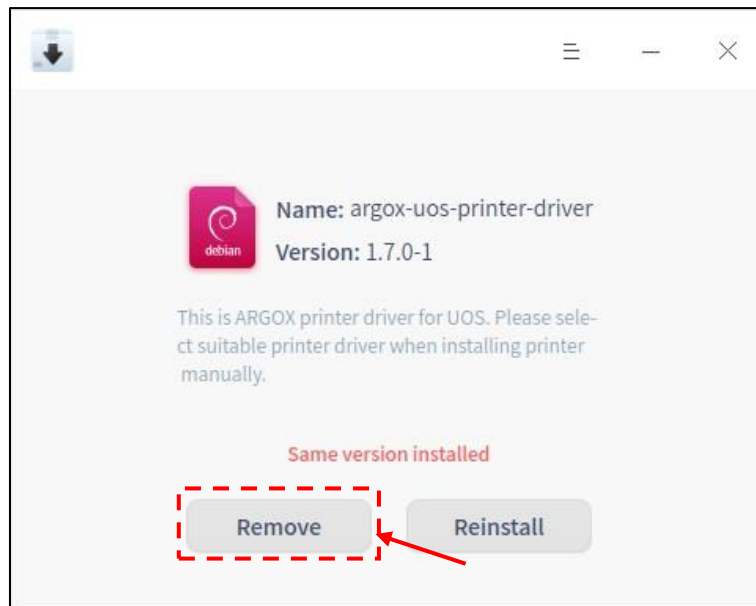


[Figure 2.2.1.D]

The UI of the package installer and the installation/un-installation procedure are controlled by UOS OS, they are not controlled by ARGOX UOS printer driver.

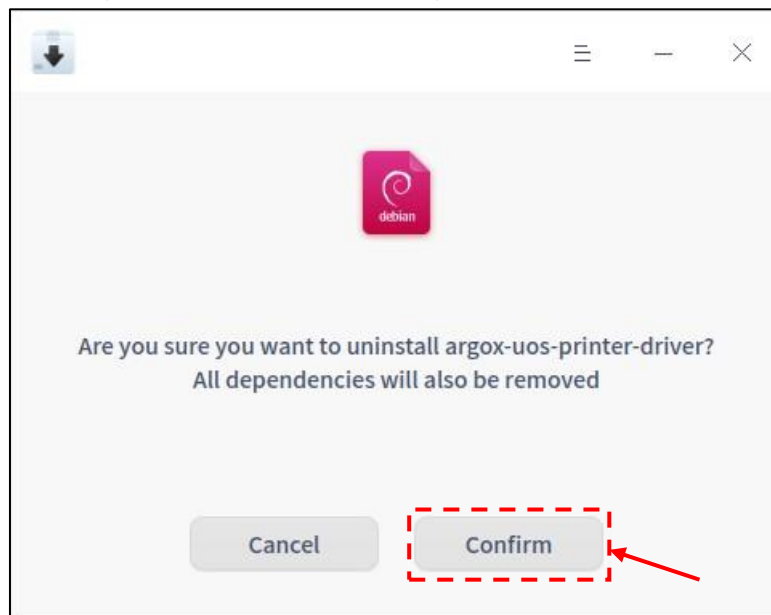
3.2.2. Uninstall Driver

Double click the driver deb package file with mouse to open the package installer (See [Figure 3.2.2.A]). Click on "Remove" button to remove the installed printer driver.



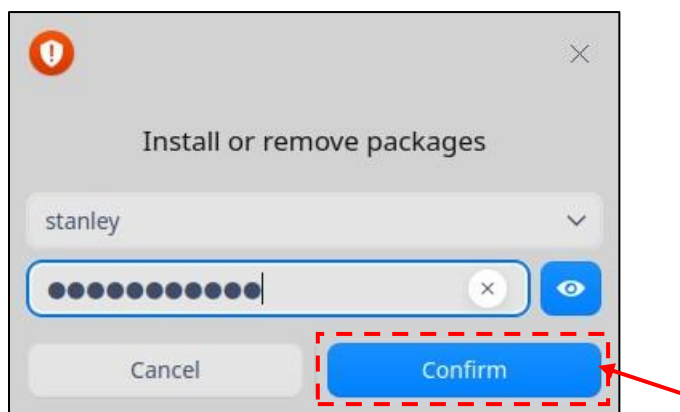
[Figure 2.2.2.A]

Click on "Confirm" button to go to next step. See [Figure 2.2.2.B].

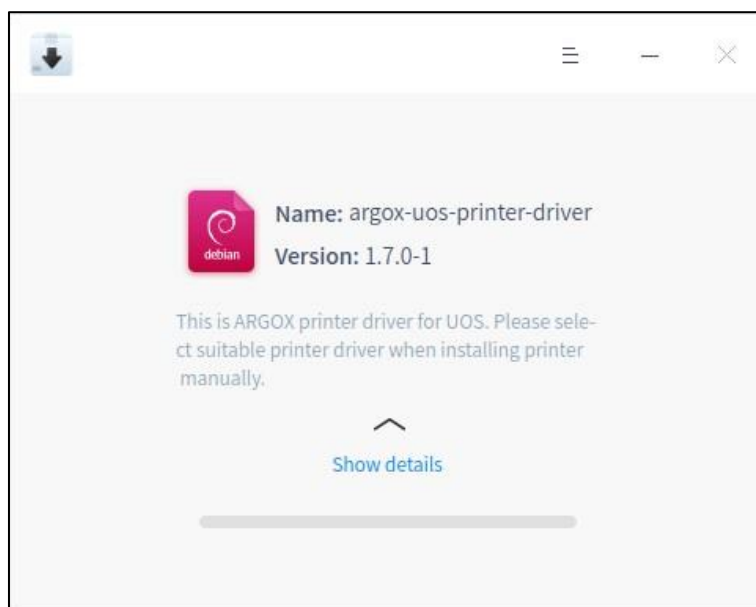


[Figure 2.2.2.B]

Input password then press "Confirm" to go to next step. See [Figure 2.2.2.C] and [Figure 2.2.2.D].

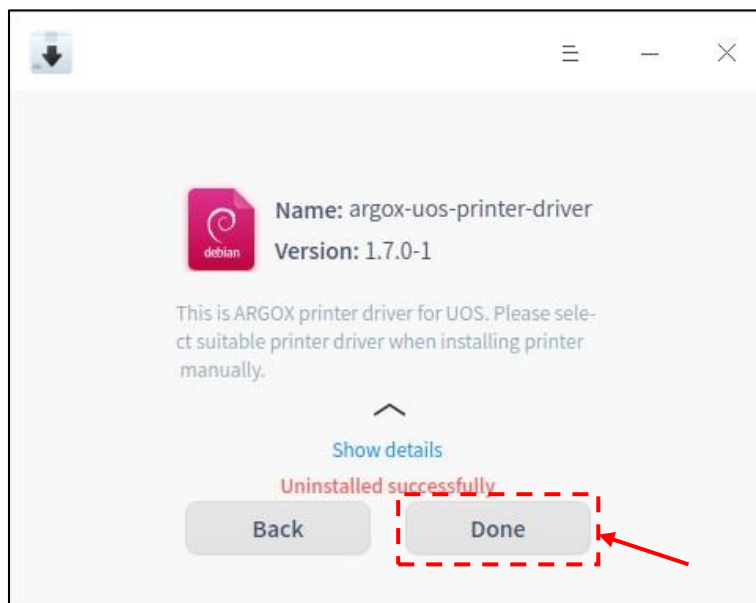


[Figure 2.2.2.C]



[Figure 2.2.2.D]

Click "Done" to finish the driver un-installation process. See [Figure 2.2.2.E].



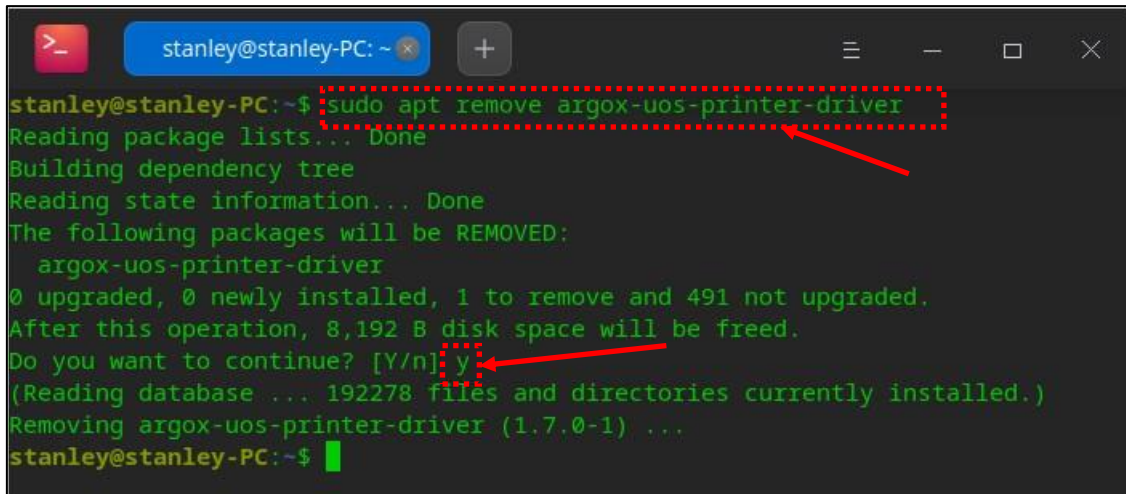
[Figure 2.2.2.E]

The driver package can also be uninstalled by command line.

Input the following command line in terminal window.

```
$ sudo apt remove argox-uos-printer-driver
```

Input "y" during uninstalling processing to finish it. See [Figure 2.2.2.F].

A terminal window titled 'stanley@stanley-PC: ~' with standard window controls. The terminal output shows the command 'sudo apt remove argox-uos-printer-driver' being entered and executed. The output includes status messages like 'Reading package lists... Done', 'Building dependency tree', and 'Reading state information... Done'. It lists the package to be removed and shows the disk space to be freed. A confirmation prompt 'Do you want to continue? [Y/n]: y' is shown with the input 'y' highlighted by a red dashed box and a red arrow. The final output shows the package being removed successfully.

```
stanley@stanley-PC:~$ sudo apt remove argox-uos-printer-driver
Reading package lists... Done
Building dependency tree
Reading state information... Done
The following packages will be REMOVED:
  argox-uos-printer-driver
0 upgraded, 0 newly installed, 1 to remove and 491 not upgraded.
After this operation, 8,192 B disk space will be freed.
Do you want to continue? [Y/n]: y
(Reading database ... 192278 files and directories currently installed.)
Removing argox-uos-printer-driver (1.7.0-1) ...
stanley@stanley-PC:~$
```

[Figure 2.2.2.F]

2.3. Other Linux Printer Driver

Please refer to the following section to install printer driver in Ubuntu, Fedora, openSUSE or other supported Linux OSs.

2.3.1. Install Driver

To install driver, please extract the driver package to the temporarily folder, for example: LinuxDriver.

Then switch into the LinuxDriver folder and input the following command line in terminal window.

```
$ sudo bash ./install
```

2.3.2. Uninstall Driver

To uninstall driver, please switch into the temporarily folder you created when you install the driver and input the following command line in terminal window.

```
$ sudo bash ./uninstall
```

If the temporarily folder does not exist, you can extract the driver package to the temporarily folder, for example: LinuxDriver.

Then switch into the LinuxDriver folder and input the following command line in terminal window.

```
$ sudo bash ./uninstall
```

3. Add Printer

3.1. Add Printer via USB Port

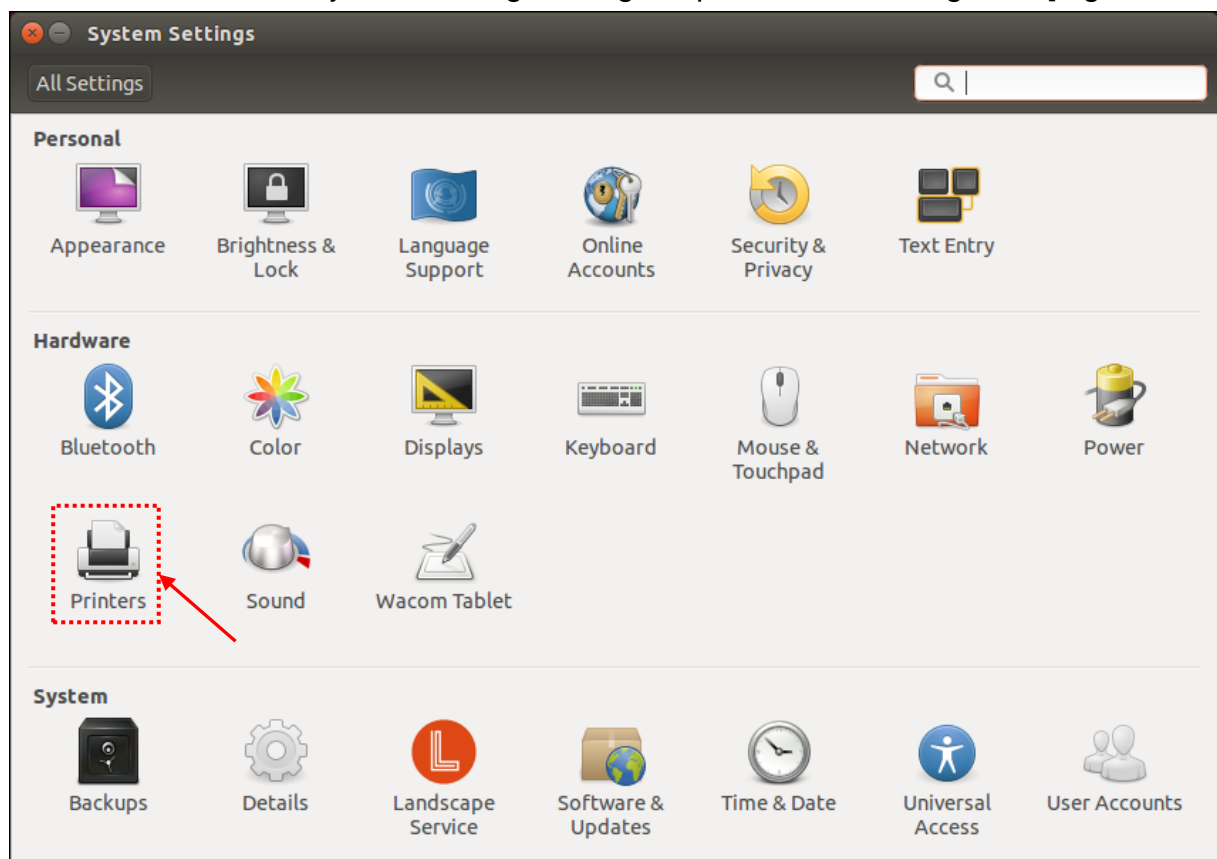
The procedures for installing printer in Ubuntu 14.04 LTS via USB port are as following. To install printer in Fedora Linux, please check the Fedora Linux web site.

- A. Connect the printer with USB cable or other supported cable to PC and make sure the printer is powered on and in Ready status.
- B. Click the System Settings button on the tool bar to open the System Settings dialog. See [Figure 3.1.A].



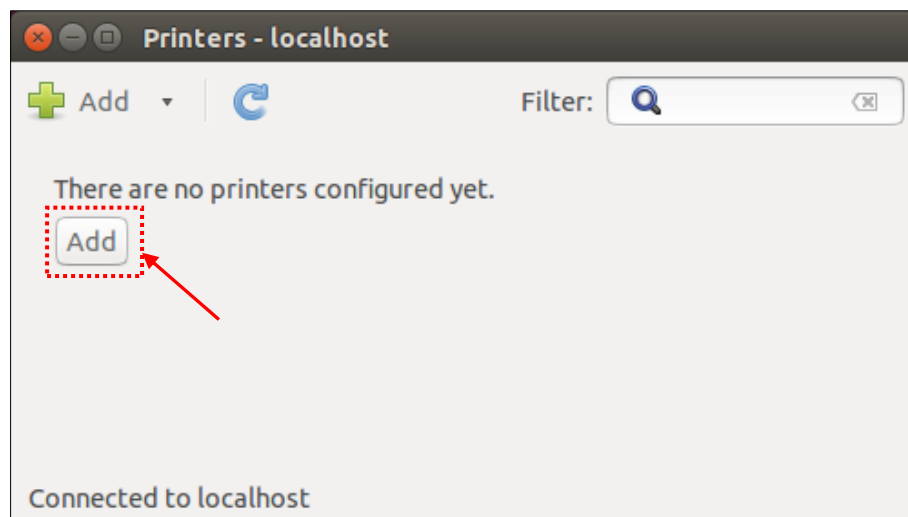
[Figure 3.1.A]

- C. Click "Printers" button in System Settings dialog to open Printers dialog. See [Figure 3.1.B].



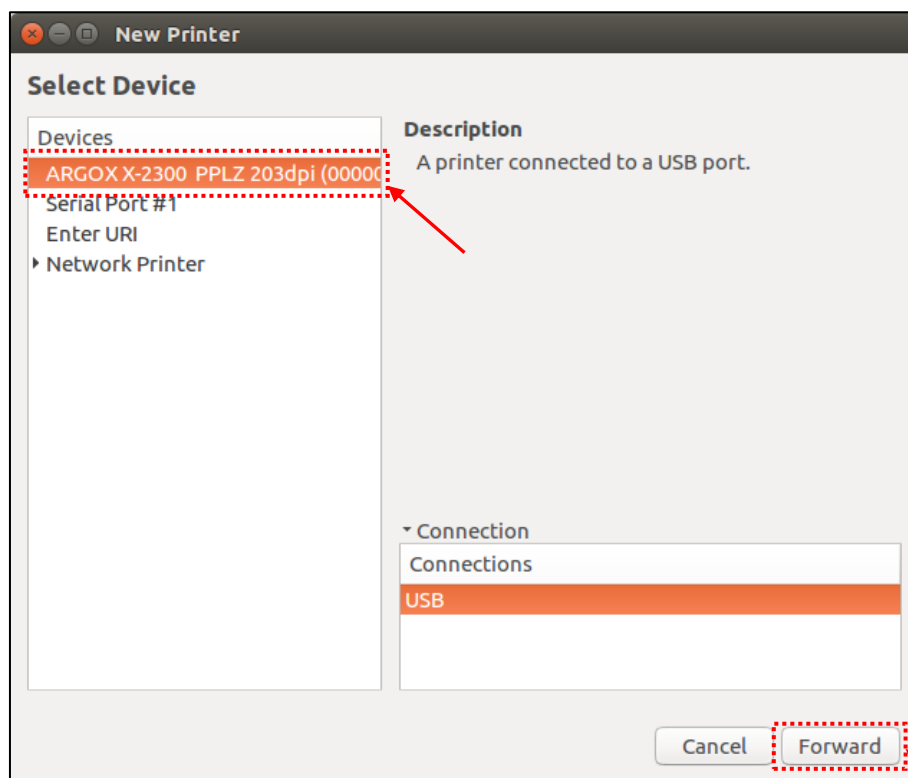
[Figure 3.1.B]

D. In Printers dialog, click "Add" button to open New Printer dialog. See [Figure 3.1.C].



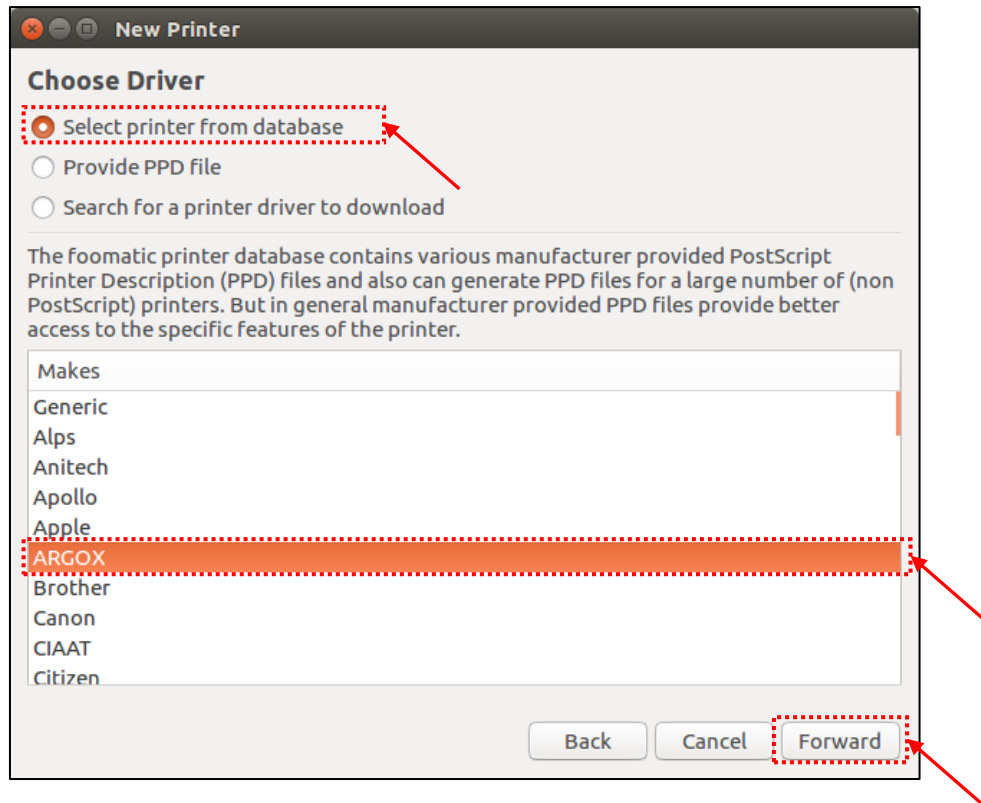
[Figure 3.1.C]

E. In New Printer dialog, select the printer name of the connected printer under "Devices" list then click "Forward" button. See [Figure 3.1.D].



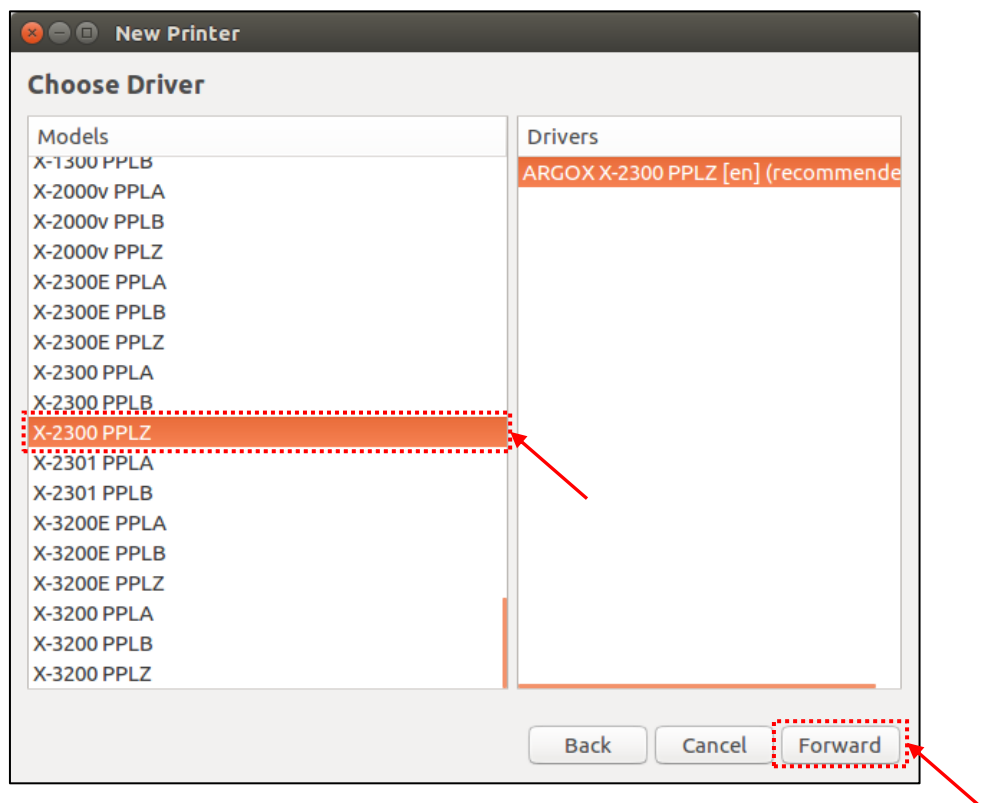
[Figure 3.1.D]

F. In Choose Driver dialog, select "Select printer from database" then select "ARGOX" in the Makes list and click "Forward" button. See [Figure 3.1.E].



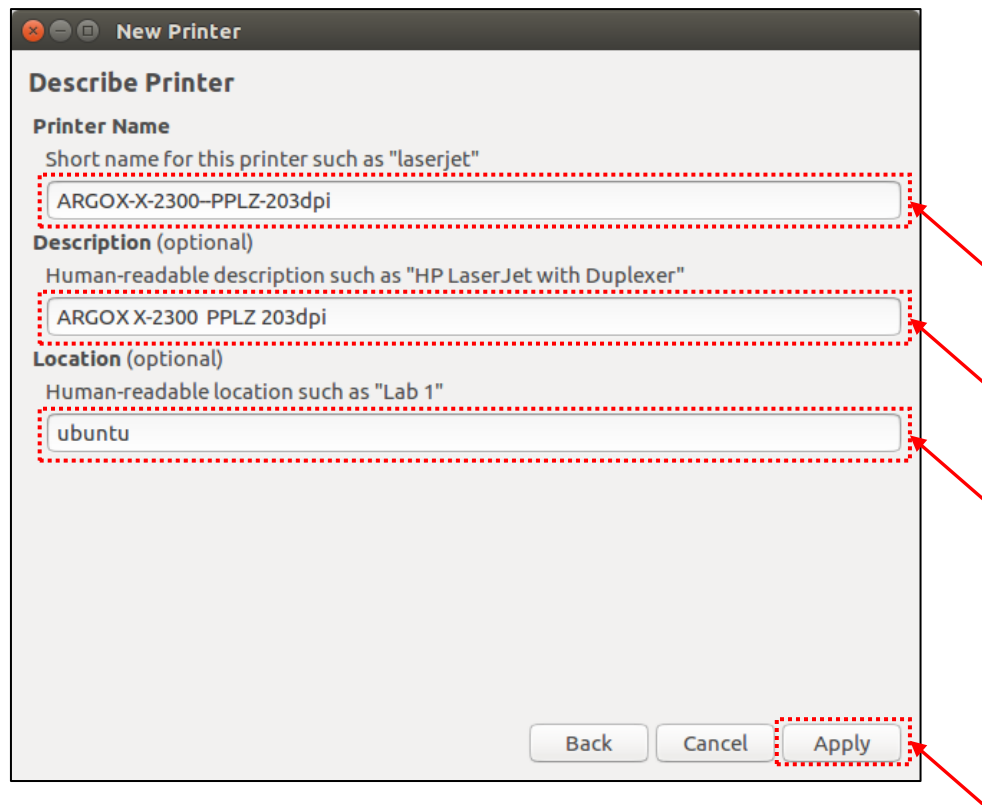
[Figure 3.1.E]

G. Select model name of the printer in "Models" list and select the driver name in "Drivers" list then click "Forward" button. See [Figure 3.1.F].



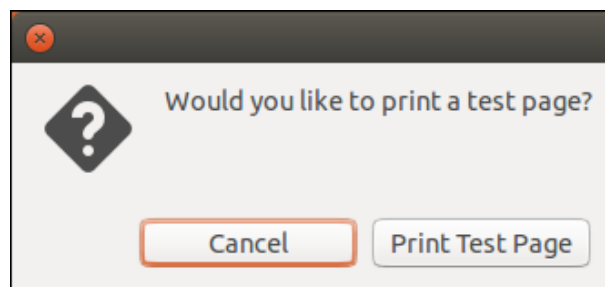
[Figure 3.1.F]

H. In Describe Printer dialog, we can input the printer name, description and location of the printer. Click "Apply" button to go the next step. See [Figure 3.1.G].



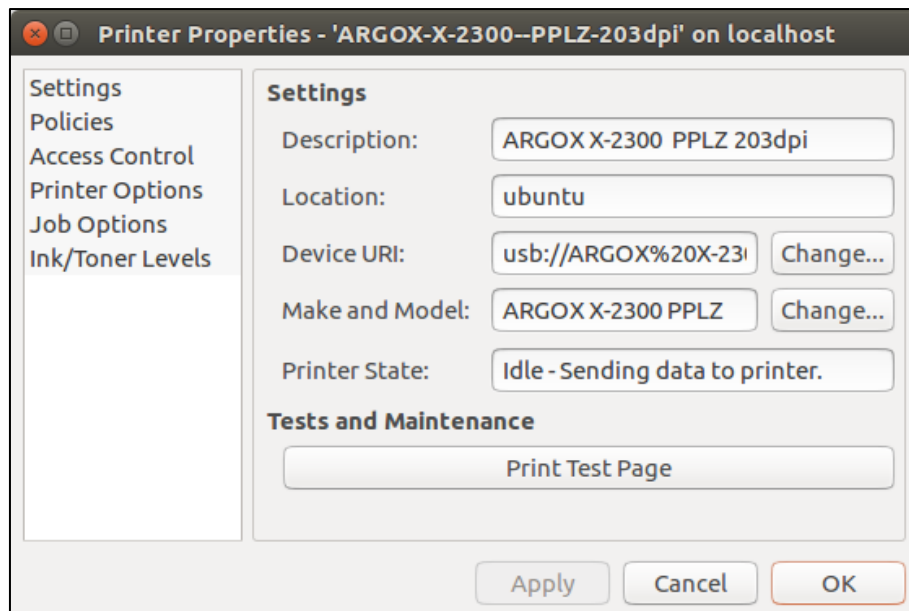
[Figure 3.1.G]

I. After a while, the print test page confirmation dialog will be displayed. See [Figure 3.1.H]. We click "Cancel" button to cancel the print test page process; we also can click "Print Test Page" button to print a test page.



[Figure 3.1.H]

J. In Printer Properties dialog, we can change the settings of the printer driver, we also can view the printer status and print a test page. See [Figure 3.1.I]. Click "OK" button in Printer Properties dialog to finish the install printer procedure.



[Figure 3.1.1.]

3.2. Add Printer via Network Port

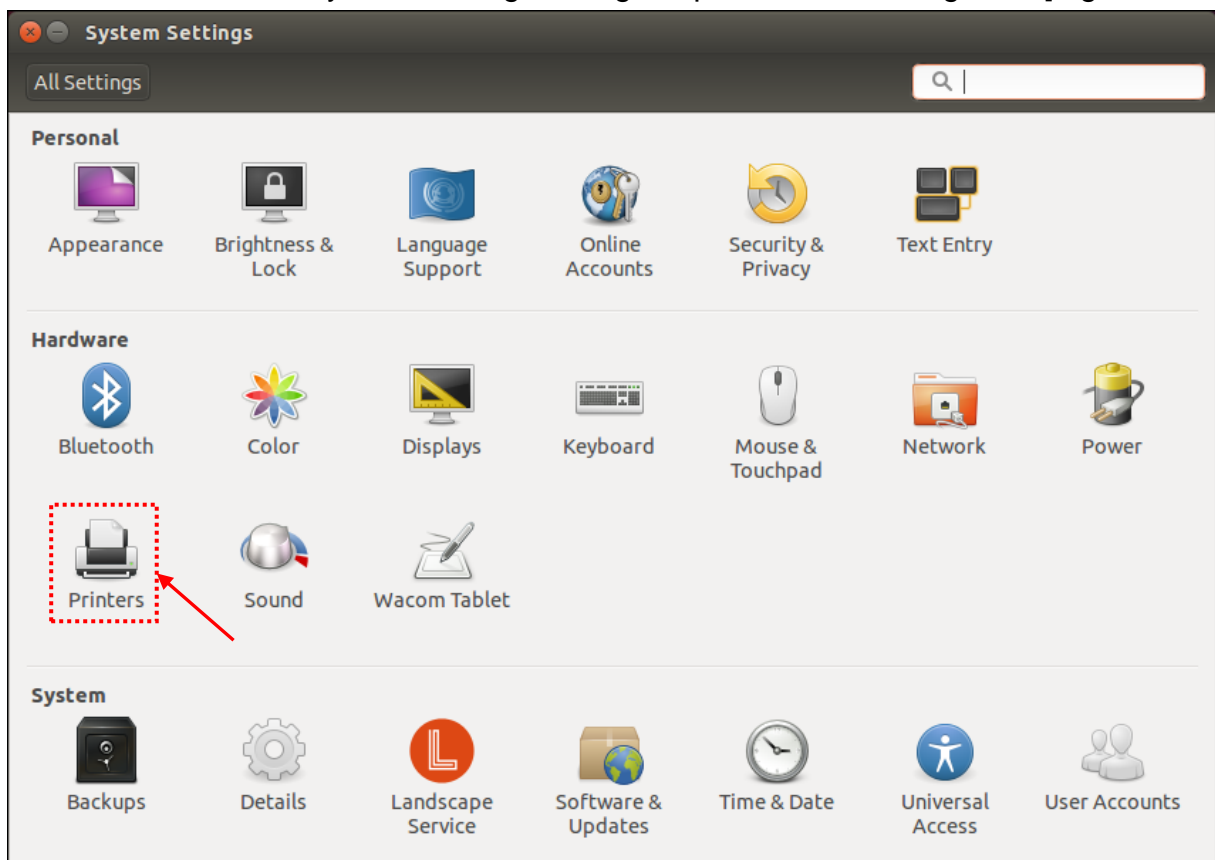
The procedures for installing printer in Ubuntu 14.04 LTS via network port are as following. To install printer in Fedora Linux, please check the Fedora Linux web site.

- A. Connect the printer with network cable to PC and make sure the printer is powered on and in Ready status.
- B. Click the System Settings button on the tool bar to open the System Settings dialog. See [Figure 3.2.A].



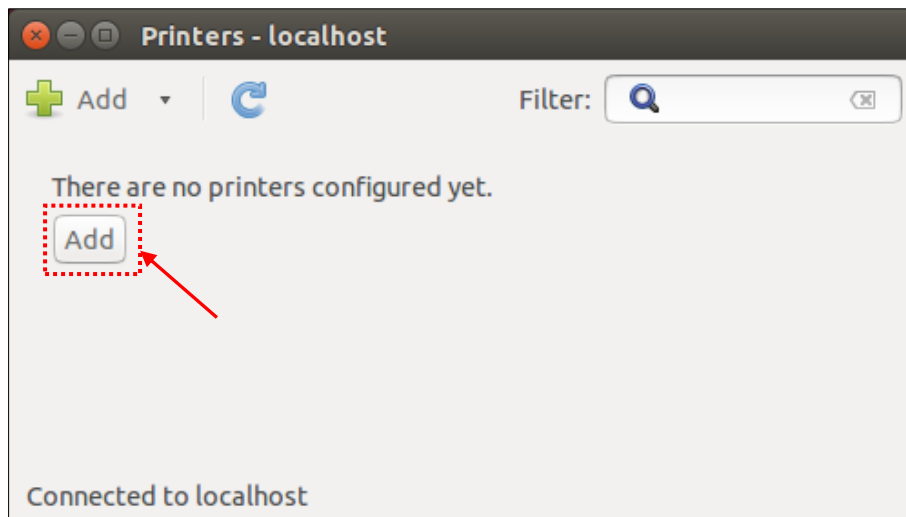
[Figure 3.2.A]

- C. Click "Printers" button in System Settings dialog to open Printers dialog. See [Figure 3.2.B].



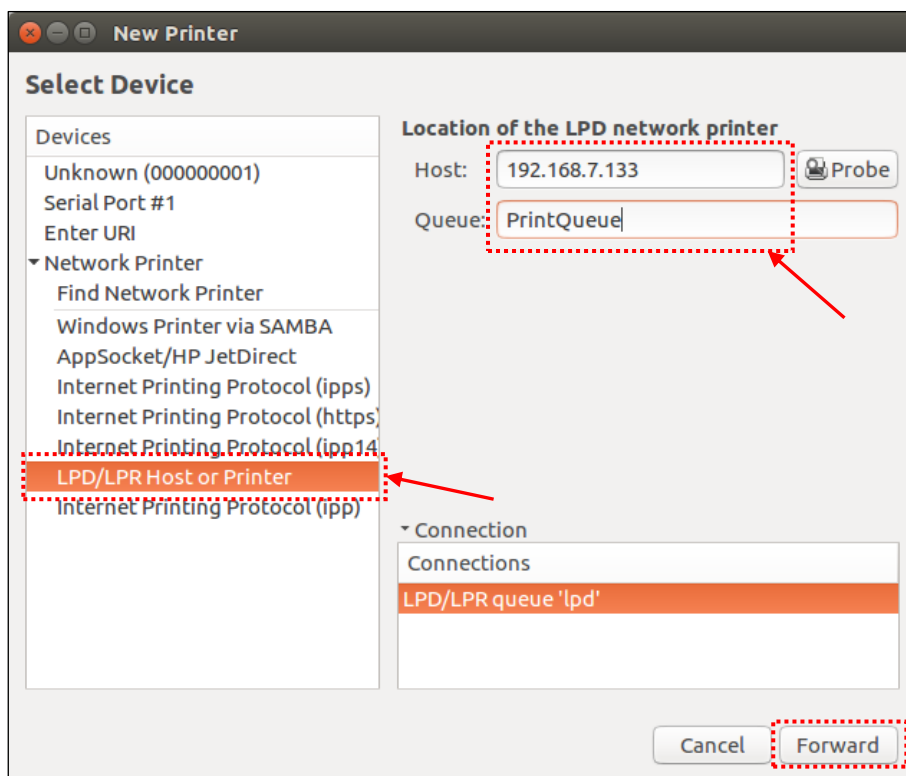
[Figure 3.2.B]

D. In Printers dialog, click "Add" button to open New Printer dialog. See [Figure 3.2.C].



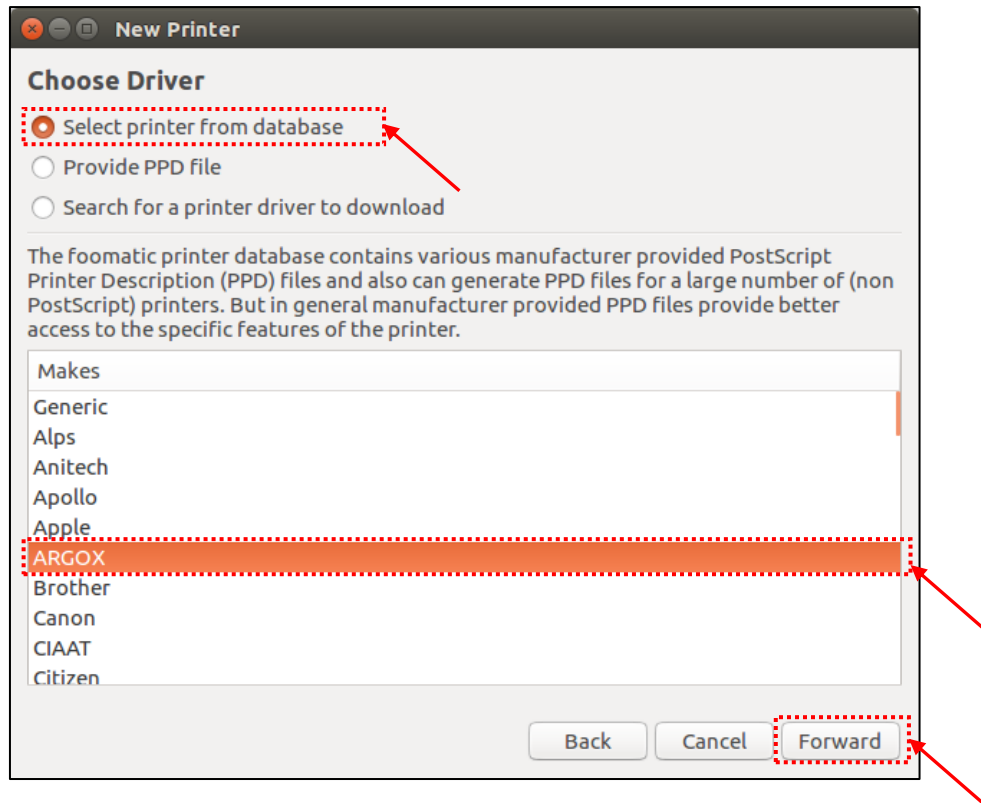
[Figure 3.2.C]

E. In New Printer dialog, select "LPD/LPR Host or Printer" in "Select Device" field. Input host IP address and queue name in "Location of the LPD network printer" field and click "Forward" button. See [Figure 3.2.D]. The queue name can be specified by user.



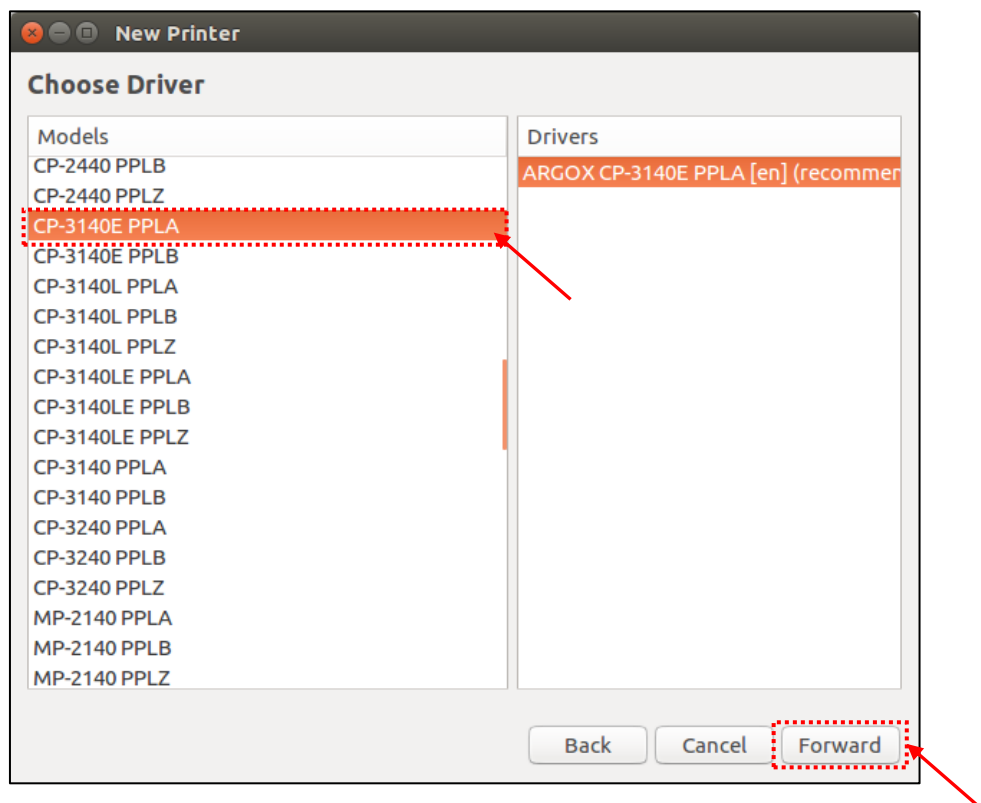
[Figure 3.2.D]

F. In Choose Driver dialog, select "Select printer from database" then select "ARGOX" in the Makes list and click "Forward" button. See [Figure 3.2.E].



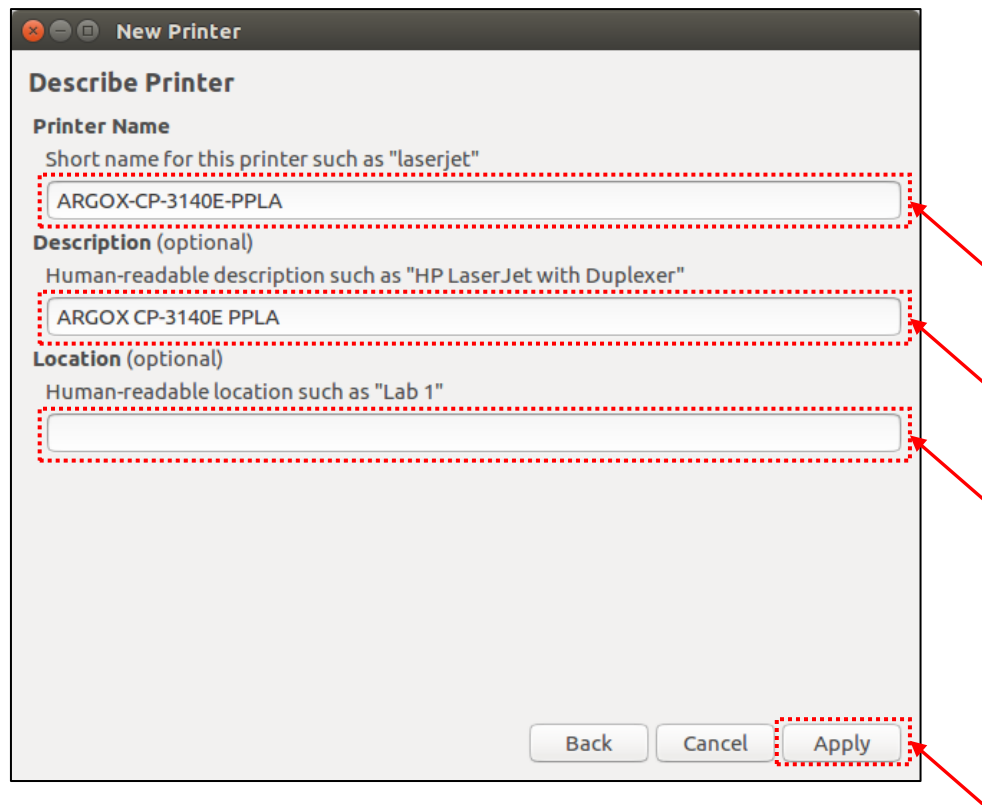
[Figure 3.2.E]

G. Select model name of the printer in "Models" list and select the driver name in "Drivers" list then click "Forward" button. See [Figure 3.2.F].



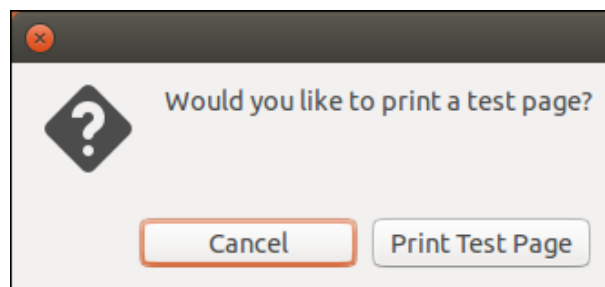
[Figure 3.2.F]

H. In Describe Printer dialog, we can input the printer name, description and location of the printer. Click "Apply" button to go the next step. See [Figure 3.2.G].



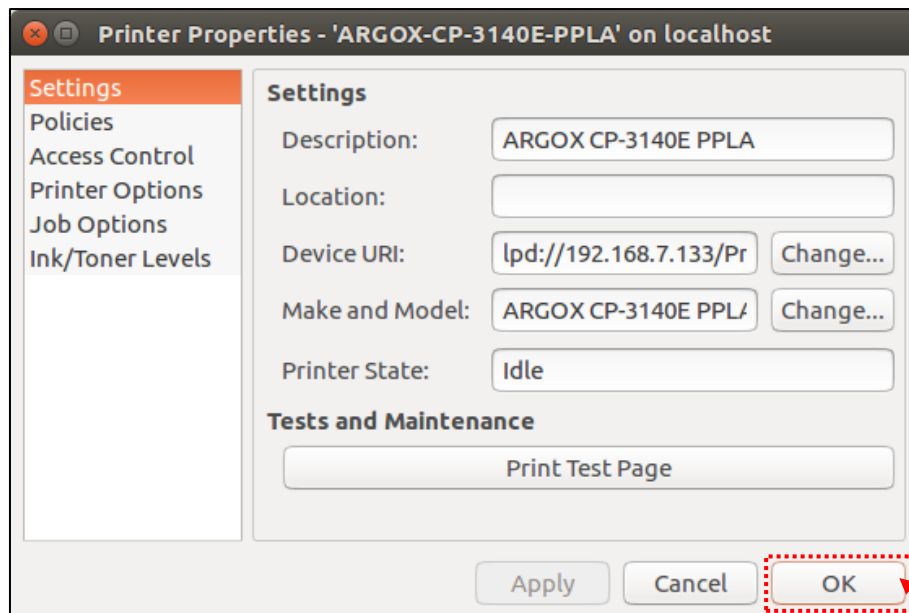
[Figure 3.2.G]

I. After a while, the print test page confirmation dialog will be displayed. See [Figure 3.2.H]. We click "Cancel" button to cancel the print test page process; we also can click "Print Test Page" button to print a test page.



[Figure 3.2.H]

J. In Printer Properties dialog, we can change the settings of the printer driver, we also can view the printer status and print a test page. See [Figure 3.2.I]. Click "OK" button in Printer Properties dialog to finish the install printer procedure.



[Figure 3.2.1]